

# Winged (Alatae) Aphids on Desert Lettuce

**Dark abdominal dorsal markings**

**No abdominal dorsal markings**

**Abdominal Dorsal Patch**

Dark patch on upper abdomen  
Antennae Tubercule Convergent  
Cornicles dark and swollen



Green Peach aphid

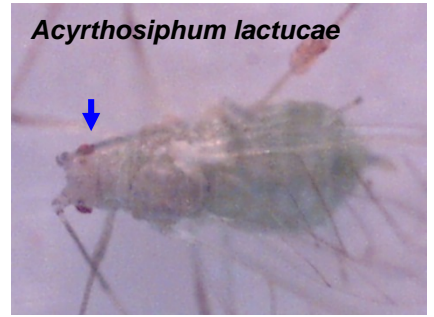
**Abdominal Dorsal Stripes**

Tips of cornicles dark, thorax light  
Abdomen usually green in color

Cornicles and thorax dark  
Abdomen brown - red in color

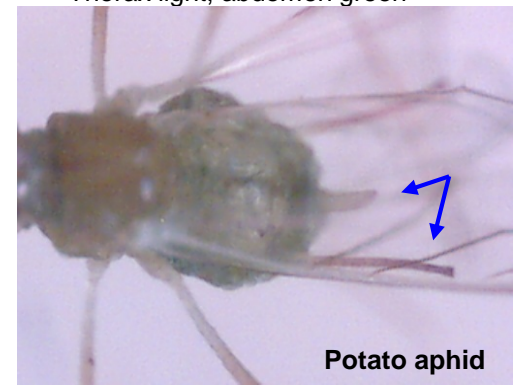


Pear shaped with **red** eyes,  
Abdomen green with white, waxy stripes  
Legs and cornicles light

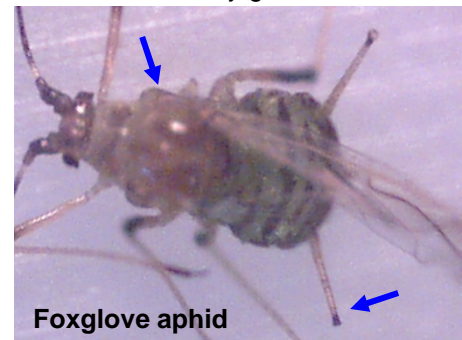


*Acyrthosiphum lactucae*

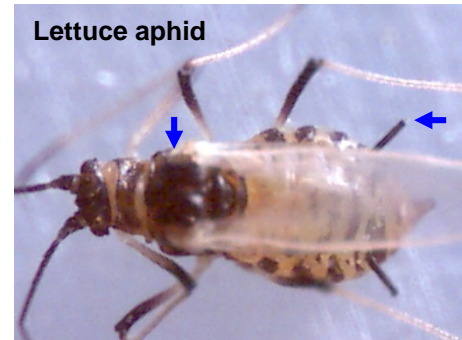
Body elongate, large, no markings  
Legs segments dark, tips of cornicles dark  
Cauda and cornicles are long  
Thorax light, abdomen green



Potato aphid



Foxglove aphid



Lettuce aphid

# Wingless (Apterous) Aphids on Desert Lettuce

No abdominal stripes

Abdominal stripes or bands

Green spots near cornicles

Body shiny, green and pear shaped  
Cornicle tips and leg segments dark  
Dark green patches at base of cornicles

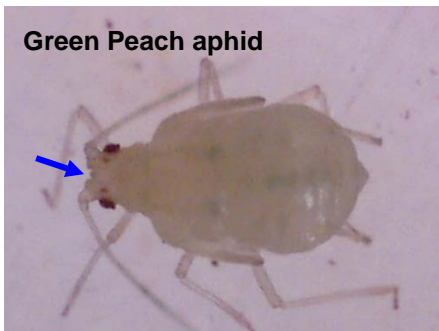


Foxglove aphid

No spots near cornicle

Antennae tubercles converging inward  
Pear shaped, legs and cornicle slight  
Lateral dark green stripes along abdomen

Green Peach aphid



Antennae tubercles diverging out  
Body green and elongate, long cornicles  
Legs long, Very mobile

Potato aphid



Body dull, pear shaped, light waxy bloom  
Pale abdominal stripes, red eyes  
Cornicles, antennae, and legs light



*Acyrtosiphum lactucae*

Body shiny, tan to red in color  
Dark abdominal stripes  
Tips of cornicles dark  
Antennae, legs have dark segments

Lettuce aphid





**Lettuce Aphid**  
*Nasonovia ribisnigri*



**Foxglove Aphid**  
*Aulacorthum solani*



**Green peach Aphid**  
*Myzus persicae*



**Lettuce Aphid**  
*Nasonovia ribisnigri*



**Foxglove Aphid**  
*Aulacorthum solani*



**Green peach Aphid**  
*Myzus persicae*



**Seed-Stem Aphid, *Acyrtosiphum lactucae***



**Potato Aphid *Macrosiphum euphorbiae***



Plate 3. A) Green Peach Aphid (GPA) mature alate and immatures on lettuce, B) GPA apterous nymphs on lettuce on broccoli, C) GPA alate; note the converging antennal tubercles and dark patch on abdomen, D) GPA apterous form; note the converging antennal tubercles

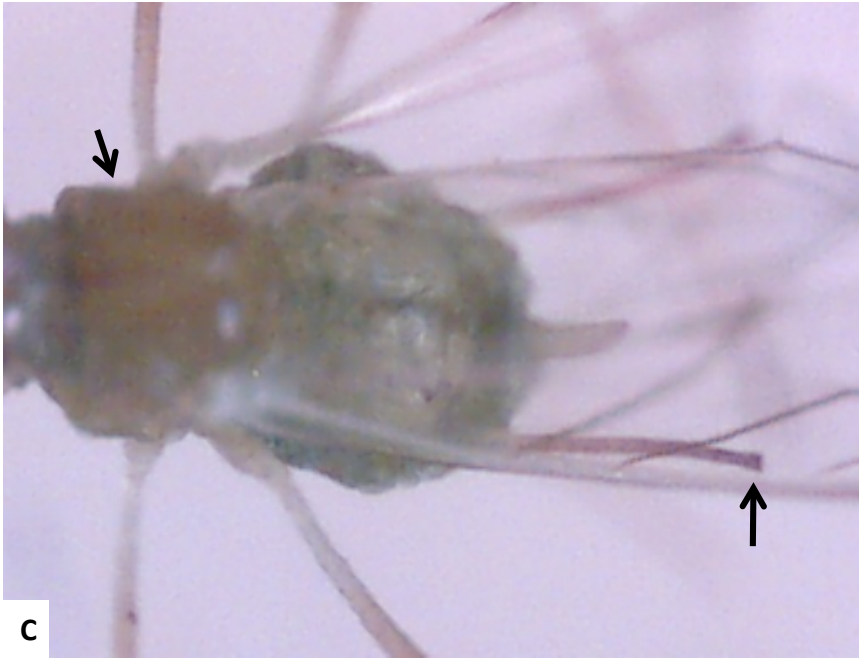
**A****B****C****D**

Plate 4. A) Potato Aphid (PA) mature alate, B) Mature PA apterous nymph, C) PA Alate; note the light thorax and long cornicles, D) PA apterous form; note the long cornicles and cauda terous; note red eyes and light cornicles





Plate 5. A) Foxglove Aphid (FGA) mature alate, B) Mature FGA apterous nymph, C) FGA Alate; note the light thorax and dark tips on cornicles, D) FGA apterous form; note dark patches at base of cornicles



Plate 6. A) Lettuce Aphid (FGA) mature alate, B) Mature LA apterous nymph, B) LA Alate; note the dark thorax and cornicles, D) FGA apterous immature forms; note the red color of abdomen and thorax

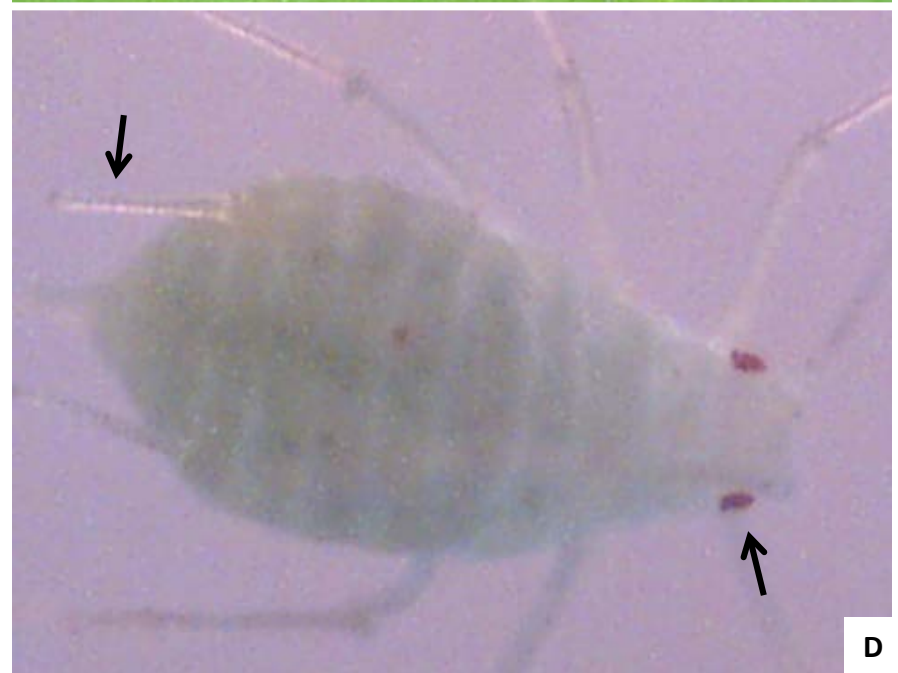
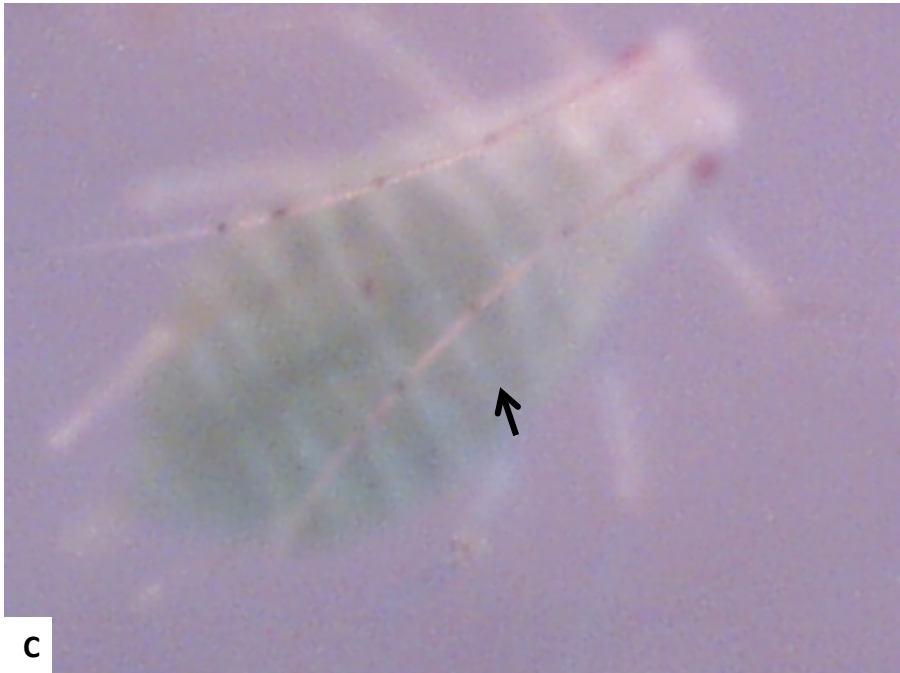


Plate 7. A) *Acyrthosiphum lactucae* (AL) mature alate., B) Mature and immature AL apterous nymphs, C) Alate or apterous; note the white waxy stripes on abdomen, D) Alate or apterous; note red eyes and light cornicles



VegIPM Update, Vol. 7, No. 23–Nov 9, 2016

Plate 8. A) GPA colonizing spinach leaf, B) FGA apterous form on celery stalk, C) FGA and GPA on celery leaf, D) Melon aphid apterous forms on celery leaf

**A**

VegIPM Update, Vol. 7, No. 23—Nov 9, 2016

**B****C****D**

**Plate 8. A) Cabbage aphids apterous forms on seed pods of broccoli seed crop, B) mature and immature cabbage aphid nymphs C) Turnip aphid apterous forms on cauliflower leaf, D) Turnip Aphid colonizing cauliflower plant**